

This Update is intended only to be used with the PIDs¹ „Volkswagen - maps + more“ for VW UPI, „SEAT - Portable System“ for SEAT Mii, Ibiza, Cupra und „Skoda - Move & Fun“ for Skoda Citigo with the label GARMIN on the bottom of the unit. Other versions of the PID are not supported.

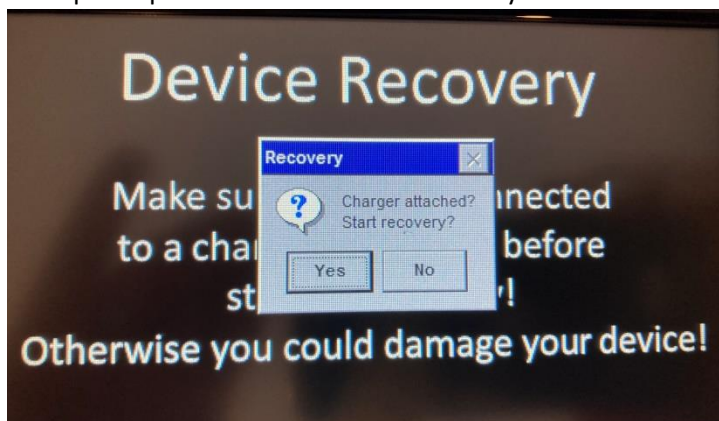


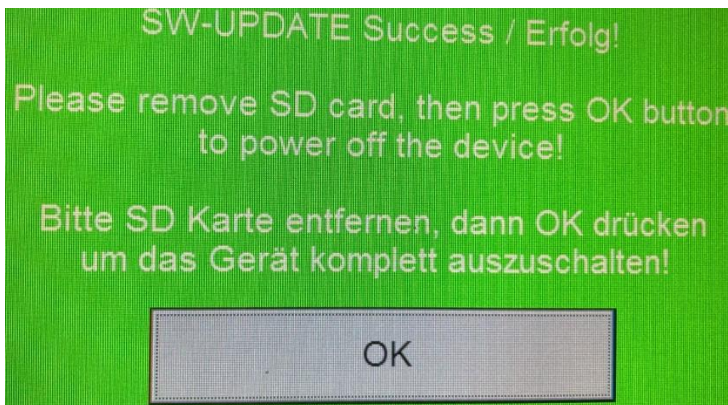
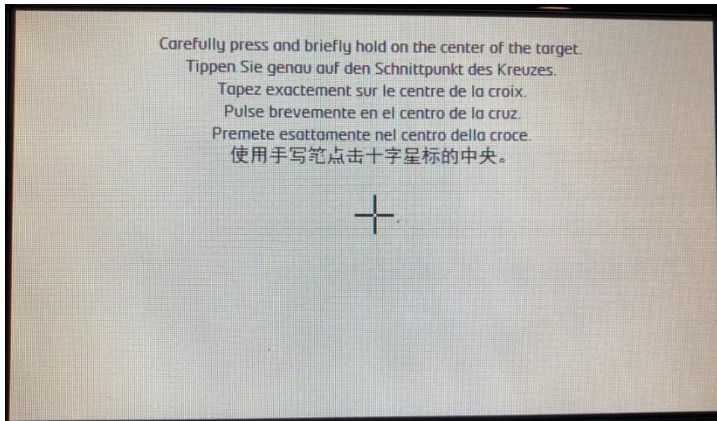
CAUTION! The Maps&More PID **must** be connected for the installation process to a power source (Mini-USB, 5V, min. 1A) at all times! Otherwise, this can lead to permanent damage of the unit.

Installing this update will **delete** all settings and personal data (e.g. connection to mobile phones, favorites, etc.) on the PID. Backup of this data is not possible.

Due to the limited size of the internal memory of the PID it is not possible to have all European countries installed at the same time. Please select the download package that fits for personal travel plans best.

1. Please select a region, download the file and store it on your PC.
2. Copy the content of the ZIP-file onto a Micro-SD-card with a size of min. 4 GB, max. 8 GB.
3. Turn off the device
4. Insert the Micro-SD-card.
5. Connect the PID to the power source.
6. Power on the PID.
7. The update process will start automatically. Please follow the instructions on the screen:





8. When the green screen that indicates the successful installation, remove the memory card and press "OK" finish the process and to power down the device
9. At the next startup of the device, it has to be set up again. Please follow the instructions on the screen.

¹ (Personal Information Device)